



# AIRPORT LAND USE COMMISSION

FOR ORANGE COUNTY  
3160 Airway Avenue Costa Mesa, CA 92626 (949) 252-5170 Fax (949) 252-6012

## AGENDA ITEM 2

May 16, 2019

**TO:** Commissioners/Alternates  
**FROM:** Lea U. Choum, Executive Officer  
**SUBJECT:** Administrative Status Report

---

The following attachments are for your review and information:

- JWA Statistics for January 2019
- JWA Statistics for February 2019
- JWA Statistics for March 2019
- Referral Confirmation Notice for Legacy Sunflower Multi-family Residential Project to the City of Santa Ana
- Comment letter to the Department of Transportation, Division of Aeronautics regarding the Proposed INDA Charter School at 2495 Campus Drive, Irvine, CA
- Notification letters regarding the Approved Amendment to the Airport Environs Land Use Plan (AELUP) for Fullerton Municipal Airport to Anaheim, Buena Park, Fullerton, Department of Transportation, Division of Aeronautics and the County of Orange

Respectfully submitted,

Lea U. Choum,  
Executive Officer

---



NEWS RELEASE

JOHN WAYNE AIRPORT • ORANGE COUNTY

March 12, 2019

**JOHN WAYNE AIRPORT POSTS JANUARY 2019 STATISTICS**

**SANTA ANA, Calif.** - Airline passenger traffic at John Wayne Airport increased in January 2019 as compared with January 2018. In January 2019, the Airport served 819,392 passengers, an increase of 0.3% when compared with the January 2018 passenger traffic count of 817,258.

Commercial aircraft operations increased 2.7% and commuter aircraft operations increased 508.8% when compared with January 2018 levels.

Total aircraft operations decreased in January 2019 as compared with the same month in 2018. In January 2019, there were 22,810 total aircraft operations (take-offs and landings), an 8.9% decrease compared to 25,041 total aircraft operations in January 2018.

General aviation activity, which accounted for 65.3% of the total aircraft operations during January 2019, decreased 15.5% when compared with January 2018.

The top three airlines in January 2019 based on passenger count were Southwest Airlines (284,391), American Airlines (130,000) and United Airlines (129,854).

John Wayne Airport  
Monthly Airport Statistics January 2019

	January 2019	January 2018	% Change	Year-To-Date 2019	Year-To-Date 2018	% Change
<b>Total passengers</b>	819,392	817,258	0.3%	819,392	817,258	0.3%
<b>Enplaned passengers</b>	409,990	407,744	0.6%	409,990	407,744	0.6%
<b>Deplaned passengers</b>	409,402	409,514	0.0%	409,402	409,514	0.0%
<b>Total Aircraft Operations</b>	22,810	25,041	-8.9%	22,810	25,041	-8.9%
<b>General Aviation</b>	14,893	17,620	-15.5%	14,893	17,620	-15.5%
<b>Commercial</b>	7,527	7,326	2.7%	7,527	7,326	2.7%
<b>Commuter<sup>1</sup></b>	347	57	508.8%	347	57	508.8%
<b>Military</b>	43	38	13.2%	43	38	13.2%
<b>Air Cargo Tons<sup>2</sup></b>	1,790	1,799	-0.5%	1,790	1,799	-0.5%

**International Statistics<sup>3</sup>** (included in totals above)

	January 2019	January 2018	% Change	Year-To-Date 2019	Year-To-Date 2018	% Change
<b>Total Passengers</b>	13,928	14,835	-6.1%	13,928	14,835	-6.1%
<b>Enplaned passengers</b>	6,808	7,088	-4.0%	6,808	7,088	-4.0%
<b>Deplaned passengers</b>	7,120	7,747	-8.1%	7,120	7,747	-8.1%
<b>Total Aircraft Operations</b>	152	161	-5.6%	152	161	-5.6%

<sup>1</sup> Aircraft used for regularly scheduled air service, configured with not more than seventy (70) seats, and operating at weights not more than ninety thousand (90,000) pounds.

<sup>2</sup> All-Cargo Carriers: 1598.1 tons  
 Passenger Carriers (incidental belly cargo): 191.4 tons  
 (Current cargo tonnage figures in this report are for December 2018)

<sup>3</sup> Includes all Canada and Mexico Commercial passengers and operations.

###

John Wayne Airport (SNA) is owned by the County of Orange and is operated as a self-supporting enterprise that receives no general fund tax revenue. The Airport serves more than 10 million passengers annually and reaches more than 20 nonstop destinations in the United States, Canada and Mexico. More information can be found at [www.ocair.com](http://www.ocair.com). Like us on [facebook.com/johnwayneairport](https://www.facebook.com/johnwayneairport) or follow us on [Twitter @johnwayneair](https://twitter.com/johnwayneair) and [Instagram @johnwayneair](https://www.instagram.com/johnwayneair).

To receive John Wayne Airport news releases automatically, go to [www.ocair.com](http://www.ocair.com) and click [Subscribe](#).



3160 AIRWAY AVENUE • COSTA MESA, CA 92626 • 949-252-5171





NEWS RELEASE

JOHN WAYNE AIRPORT • ORANGE COUNTY

April 1, 2019

**JOHN WAYNE AIRPORT POSTS FEBRUARY 2019 STATISTICS**

**SANTA ANA, Calif.** - Airline passenger traffic at John Wayne Airport increased in February 2019 as compared with February 2018. In February 2019, the Airport served 789,557 passengers, an increase of 3.4% when compared with the February 2018 passenger traffic count of 763,505.

Commercial aircraft operations increased 2.1% and commuter aircraft operations increased 1286.7% when compared with February 2018 levels.

Total aircraft operations decreased in February 2019 as compared with the same month in 2018. In February 2019, there were 21,360 total aircraft operations (take-offs and landings), an 8.5% decrease compared to 23,348 total aircraft operations in February 2018.

General aviation activity, which accounted for 66.1% of the total aircraft operations during February 2019, decreased 15.4% when compared with February 2018.

The top three airlines in February 2019 based on passenger count were Southwest Airlines (280,273), American Airlines (128,287) and United Airlines (119,266).

John Wayne Airport  
Monthly Airport Statistics February 2019

	February 2019	February 2018	% Change	Year-To-Date 2019	Year-To-Date 2018	% Change
Total passengers	789,557	763,505	3.4%	1,608,949	1,580,763	1.8%
Enplaned passengers	393,457	379,114	3.8%	803,447	786,858	2.1%
Deplaned passengers	396,100	384,391	3.0%	805,502	793,905	1.5%
Total Aircraft Operations	21,360	23,348	-8.5%	44,170	48,389	-8.7%
General Aviation	14,125	16,693	-15.4%	29,018	34,313	-15.4%
Commercial	6,737	6,596	2.1%	14,264	13,922	2.5%
Commuter <sup>1</sup>	416	30	1286.7%	763	87	777.0%
Military	82	29	182.8%	125	67	86.6%
Air Cargo Tons <sup>2</sup>	1,538	1,578	-2.5%	3,328	3,377	-1.5%

International Statistics<sup>3</sup> (Included in totals above)

	February 2019	February 2018	% Change	Year-To-Date 2019	Year-To-Date 2018	% Change
Total Passengers	12,993	12,665	2.6%	26,921	27,500	-2.1%
Enplaned passengers	6,763	6,324	6.9%	13,571	13,412	1.2%
Deplaned passengers	6,230	6,341	-1.8%	13,350	14,088	-5.2%
Total Aircraft Operations	140	144	-2.8%	292	305	-4.3%

<sup>1</sup> Aircraft used for regularly scheduled air service, configured with not more than seventy (70) seats, and operating at weights not more than ninety thousand (90,000) pounds.

<sup>2</sup> All-Cargo Carriers: 1,352.5 tons  
 Passenger Carriers (incidental belly cargo): 185.8 tons  
 (Current cargo tonnage figures in this report are for January 2019)

<sup>3</sup> Includes all Canada and Mexico Commercial passengers and operations.

###

John Wayne Airport (SNA) is owned by the County of Orange and is operated as a self-supporting enterprise that receives no general fund tax revenue. The Airport serves more than 10 million passengers annually and reaches more than 20 nonstop destinations in the United States, Canada and Mexico. More information can be found at [www.ocair.com](http://www.ocair.com). Like us on [facebook.com/johnwayneairport](https://www.facebook.com/johnwayneairport) or follow us on [Twitter @johnwayneair](https://twitter.com/johnwayneair) and [Instagram @johnwayneair](https://www.instagram.com/johnwayneair).

To receive John Wayne Airport news releases automatically, go to [www.ocair.com](http://www.ocair.com) and click [Subscribe](#).



3160 AIRWAY AVENUE • COSTA MESA, CA 92626 • 949-252-5171





NEWS RELEASE

JOHN WAYNE AIRPORT • ORANGE COUNTY

April 22, 2019

**JOHN WAYNE AIRPORT POSTS MARCH 2019 STATISTICS**

**SANTA ANA, Calif.** - Airline passenger traffic at John Wayne Airport increased in March 2019 as compared with March 2018. In March 2019, the Airport served 923,469 passengers, an increase of 2.8% when compared with the March 2018 passenger traffic count of 898,418.

Commercial aircraft operations increased 1.4% and commuter aircraft operations increased 700% when compared with March 2018 levels.

Total aircraft operations increased in March 2019 as compared with the same month in 2018. In March 2019, there were 26,107 total aircraft operations (take-offs and landings), a 2.7% increase compared to 25,419 total aircraft operations in March 2018.

General aviation activity, which accounted for 68.6% of the total aircraft operations during March 2019, increased 1.5% when compared with March 2018.

The top three airlines in March 2019 based on passenger count were Southwest Airlines (326,163), American Airlines (150,598) and United Airlines (139,978).

John Wayne Airport  
Monthly Airport Statistics March 2019

	March 2019	March 2018	% Change	Year-To-Date 2019	Year-To-Date 2018	% Change
Total passengers	923,469	898,418	2.8%	2,532,418	2,479,181	2.1%
Enplaned passengers	462,113	450,280	2.6%	1,265,560	1,237,138	2.3%
Deplaned passengers	461,356	448,138	2.9%	1,266,858	1,242,043	2.0%
Total Aircraft Operations	26,107	25,419	2.7%	70,277	73,808	-4.8%
General Aviation	17,903	17,637	1.5%	46,921	51,950	-9.7%
Commercial	7,720	7,613	1.4%	21,984	21,535	2.1%
Commuter <sup>1</sup>	400	50	700.0%	1,163	137	748.9%
Military	84	119	-29.4%	209	186	12.4%
Air Cargo Tons <sup>2</sup>	1,401	1,430	-2.0%	4,729	4,807	-1.6%

International Statistics<sup>3</sup> (included in totals above)

	March 2019	March 2018	% Change	Year-To-Date 2019	Year-To-Date 2018	% Change
Total Passengers	16,693	16,218	2.9%	43,614	43,718	-0.2%
Enplaned passengers	8,460	8,360	1.2%	22,031	21,772	1.2%
Deplaned passengers	8,233	7,858	4.8%	21,583	21,946	-1.7%
Total Aircraft Operations	175	175	0.0%	467	480	-2.7%

<sup>1</sup> Aircraft used for regularly scheduled air service, configured with not more than seventy (70) seats, and operating at weights not more than ninety thousand (90,000) pounds.

<sup>2</sup> All-Cargo Carriers: 1,232.6 tons  
 Passenger Carriers (incidental belly cargo): 168.8 tons  
 (Current cargo tonnage figures in this report are for February 2019)

<sup>3</sup> Includes all Canada and Mexico Commercial passengers and operations.

###

John Wayne Airport (SNA) is owned by the County of Orange and is operated as a self-supporting enterprise that receives no general fund tax revenue. The Airport serves more than 10 million passengers annually and reaches more than 20 nonstop destinations in the United States, Canada and Mexico. More information can be found at [www.ocair.com](http://www.ocair.com). Like us on [facebook.com/johnwayneairport](https://www.facebook.com/johnwayneairport), or follow us on [Twitter @johnwayneair](https://twitter.com/johnwayneair) and [Instagram @johnwayneair](https://www.instagram.com/johnwayneair).

To receive John Wayne Airport news releases automatically, go to [www.ocair.com](http://www.ocair.com) and click [Subscribe](#).



3160 AIRWAY AVENUE • COSTA MESA, CA 92626 • 949-253-5171





# AIRPORT LAND USE COMMISSION

FOR ORANGE COUNTY

3160 Airway Avenue • Costa Mesa, California 92626 • 949.252.5170 fax: 949.252.6012

May 6, 2019

Ivan Orozco, Assistant Planner II  
City of Santa Ana/Planning & Building  
20 Civic Center Plaza  
P.O. Box 1988  
Santa Ana, CA 92702

Subject: Referral Confirmation Notice for Legacy Sunflower Multi-Family Residential Project

Dear Mr. Orozco:

This letter is to confirm that the Airport Land Use Commission (ALUC) staff has received the City of Santa Ana referral request of your project entitled: Legacy Sunflower Multi-Family Residential Project located at 651 Sunflower Avenue.

Your referral, being complete and sufficient for a review and consistency determination by the Commission, is hereby accepted as of May 6, 2019 and will be agendaized for the next Commission meeting of May 16, 2019, unless otherwise noticed. Your attendance at the meeting will be appreciated in case there are questions regarding this item. The meeting location is included below for your information:

4:00 p.m.  
JWA/Eddie Martin Building/Airport Commission Meeting Room  
3160 Airway Avenue  
Costa Mesa, CA 92626

A copy of the meeting agenda and staff report regarding this item will be provided to you prior to the Commission meeting. Please contact me at (949) 252-5123 or via email at [lchoum@ocair.com](mailto:lchoum@ocair.com) if you need additional details or information regarding the Commission's review of this project.

Sincerely,

Lea U. Choum  
Executive Officer





# AIRPORT LAND USE COMMISSION

FOR ORANGE COUNTY

3160 Airway Avenue • Costa Mesa, California 92626 • 949.252.5170 fax: 949.252.6012

May 8, 2019

City of Buena Park  
Brady M. Woods, Planning Manager  
6650 Beach Boulevard, First Floor  
Buena Park CA 90622

Subject: Approved Amendment to the *Airport Environs Land Use Plan (AELUP) for Fullerton Municipal Airport*.

Dear Mr. Woods,

As you may know, the Airport Land Use Commission (ALUC) for Orange County approved amendments to the *AELUP for Fullerton Municipal Airport* on February 21, 2019. Please use the website <https://www.ocair.com/commissions/aluc/> to view the approved amended *AELUP for Fullerton Municipal Airport* for your reference.

California Government Code section 65302.3 requires that general plans and applicable specific plans (zoning) be consistent with the *AELUP*, and the law further requires that such local plans be made consistent with the *AELUP* within 180 days of an *AELUP* Amendment. For guidance on achieving consistency with an *AELUP* please refer to pages 5-1 to 5-6 of the Caltrans California Airport Land Use Planning Handbook (October 2011). This document may be found online at: <http://dot.ca.gov/hq/planning/aeronaut/documents/alucp/AirportLandUsePlanningHandbook.pdf>.

We look forward to working closely with you to ensure consistency of your jurisdiction's land use plans with the *AELUP for Fullerton Municipal Airport*. As part of our review process, please provide us with a copy of your General Plan and any relevant zoning documents. Should you have additional questions please contact Lea U. Choum at 949.252.5170 or via email at [lchoum@ocair.com](mailto:lchoum@ocair.com).

Sincerely,

A handwritten signature in blue ink that reads "Lea U. Choum".

Lea U. Choum  
Executive Officer

Attachment: *AELUP for Fullerton Municipal Airport*

cc: ALUC for Orange County  
Barry Rondinella



# AIRPORT LAND USE COMMISSION

FOR ORANGE COUNTY

3160 Airway Avenue • Costa Mesa, California 92626 • 949.252.5170 fax: 949.252.6012

May 8, 2019

Mr. Tony Sordello, Associate Transportation Planner  
Department of Transportation  
Division of Aeronautics M.S. #40  
1120 N Street  
PO BOX 942874  
Sacramento, CA 94274-0001

Subject: Approved Amendment to the *Airport Environs Land Use Plan (AELUP) for Fullerton Municipal Airport*.

Dear Mr. Sordello,

As you may know, the Airport Land Use Commission (ALUC) for Orange County approved amendments to the *AELUP for Fullerton Municipal Airport* on February 21, 2019. Please use the website <https://www.ocair.com/commissions/aluc/> to view the approved amended *AELUP for Fullerton Municipal Airport* for your reference.

California Government Code Section 65302.3 requires that general plans and applicable specific plans (zoning) be consistent with the *AELUP*, and the law further requires that such local plans be made consistent with the *AELUP* within 180 days of an *AELUP* Amendment. For guidance on achieving consistency with an *AELUP* please refer to pages 5-1 to 5-6 of the Caltrans California Airport Land Use Planning Handbook (October 2011). This document may be found online at: <http://dot.ca.gov/hq/planning/aeronaut/documents/alucp/AirportLandUsePlanningHandbook.pdf>.

We look forward to working closely with you to ensure consistency of your jurisdiction's land use plans with the *AELUP for Fullerton Municipal Airport*. As part of our review process, please provide us with a copy of your General Plan and any relevant zoning documents. Should you have additional questions please contact Lea U. Choum at 949.252.5170 or via email at [lchoum@ocair.com](mailto:lchoum@ocair.com).

Sincerely,

Handwritten signature of Lea U. Choum in blue ink.

Lea U. Choum  
Executive Officer

Attachment: *AELUP for Fullerton Municipal Airport*

cc: ALUC for Orange County  
Barry Rondinella



# AIRPORT LAND USE COMMISSION

FOR ORANGE COUNTY

3160 Airway Avenue • Costa Mesa, California 92626 • 949.252.5170 fax: 949.252.6012

May 8, 2019

City of Fullerton, Community Development Department  
Matt Foulkes, Planning Manager  
303 West Commonwealth Avenue  
Fullerton, CA 92832-1775

Subject: Approved Amendment to the *Airport Environs Land Use Plan (AELUP) for Fullerton Municipal Airport*.

Dear Mr. Foulkes,

As you may know, the Airport Land Use Commission (ALUC) for Orange County approved amendments to the *AELUP for Fullerton Municipal Airport* on February 21, 2019. Please use the website <https://www.ocair.com/commissions/aluc/> to view the approved amended *AELUP for Fullerton Municipal Airport* for your reference.

California Government Code Section 65302.3 requires that general plans and applicable specific plans (zoning) be consistent with the *AELUP*, and the law further requires that such local plans be made consistent with the *AELUP* within 180 days of an *AELUP* Amendment. For guidance on achieving consistency with an *AELUP* please refer to pages 5-1 to 5-6 of the Caltrans California Airport Land Use Planning Handbook (October 2011). This document may be found online at: <http://dot.ca.gov/hq/planning/aeronaut/documents/alucp/AirportLandUsePlanningHandbook.pdf>.

We look forward to working closely with you to ensure consistency of your jurisdiction's land use plans with the *AELUP for Fullerton Municipal Airport*. As part of our review process, please provide us with a copy of your General Plan and any relevant zoning documents. Should you have additional questions please contact Lea U. Choum at 949.252.5170 or via email at [lchoum@ocair.com](mailto:lchoum@ocair.com).

Sincerely,

A handwritten signature in blue ink that reads "Lea U. Choum".

Lea U. Choum  
Executive Officer

Attachment: *AELUP for Fullerton Municipal Airport*

cc: ALUC for Orange County  
Barry Rondinella



# AIRPORT LAND USE COMMISSION

FOR ORANGE COUNTY

3160 Airway Avenue • Costa Mesa, California 92626 • 949.252.5170 fax: 949.252.6012

May 8, 2019

Ms. Joanna Chang, Land Use Manager  
County of Orange  
OC Public Works  
300 N. Flower St. 1st Floor  
Santa Ana, CA 92703

Subject: Approved Amendment to the *Airport Environs Land Use Plan (AELUP) for Fullerton Municipal Airport*.

Dear Ms. Chang,

As you may know, the Airport Land Use Commission (ALUC) for Orange County approved amendments to the *AELUP for Fullerton Municipal Airport* on February 21, 2019. Please use the website <https://www.ocair.com/commissions/aluc/> to view the approved amended *AELUP for Fullerton Municipal Airport* for your reference.

California Government Code Section 65302.3 requires that general plans and applicable specific plans (zoning) be consistent with the *AELUP*, and the law further requires that such local plans be made consistent with the *AELUP* within 180 days of an *AELUP* Amendment. For guidance on achieving consistency with an *AELUP* please refer to pages 5-1 to 5-6 of the Caltrans California Airport Land Use Planning Handbook (October 2011). This document may be found online at: <http://dot.ca.gov/hq/planning/aeronaut/documents/alucp/AirportLandUsePlanningHandbook.pdf>.

We look forward to working closely with you to ensure consistency of your jurisdiction's land use plans with the *AELUP for Fullerton Municipal Airport*. As part of our review process, please provide us with a copy of your General Plan and any relevant zoning documents. Should you have additional questions please contact Lea U. Choum at 949.252.5170 or via email at [lchoum@ocair.com](mailto:lchoum@ocair.com).

Sincerely,

A handwritten signature in blue ink that reads "Lea U. Choum".

Lea U. Choum  
Executive Officer

Attachment: *AELUP for Fullerton Municipal Airport*

cc: ALUC for Orange County  
Barry Rondinella



# AIRPORT LAND USE COMMISSION

FOR ORANGE COUNTY

3160 Airway Avenue • Costa Mesa, California 92626 • 949.252.5170 fax: 949.252.6012

May 8, 2019

City of Anaheim  
David Belmer, Planning & Building Director  
200 S. Anaheim Boulevard, Suite 162  
Anaheim CA 92805

Subject: Approved Amendment to the *Airport Environs Land Use Plan (AELUP) for Fullerton Municipal Airport*.

Dear Mr. Belmer,

As you may know, the Airport Land Use Commission (ALUC) for Orange County approved amendments to the *AELUP for Fullerton Municipal Airport* on February 21, 2019. Please use the website <https://www.ocair.com/commissions/aluc/> to view the approved amended AELUP for Fullerton Municipal Airport for your reference.

California Government Code Section 65302.3 requires that general plans and applicable specific plans (zoning) be consistent with the *AELUP*, and the law further requires that such local plans be made consistent with the *AELUP* within 180 days of an *AELUP* Amendment. For guidance on achieving consistency with an *AELUP* please refer to pages 5-1 to 5-6 of the Caltrans California Airport Land Use Planning Handbook (October 2011). This document may be found online at: <http://dot.ca.gov/hq/planning/aeronaut/documents/alucp/AirportLandUsePlanningHandbook.pdf>.

We look forward to working closely with you to ensure consistency of your jurisdiction's land use plans with the *AELUP for Fullerton Municipal Airport*. As part of our review process, please provide us with a copy of your General Plan and any relevant zoning documents. Should you have additional questions please contact Lea U. Choum at 949.252.5170 or via email at [lchoum@ocair.com](mailto:lchoum@ocair.com).

Sincerely,

Handwritten signature of Lea U. Choum in blue ink.

Lea U. Choum  
Executive Officer

Attachment: *AELUP for Fullerton Municipal Airport*

cc: ALUC for Orange County  
Barry Rondinella



# AIRPORT LAND USE COMMISSION

---

FOR ORANGE COUNTY

3160 Airway Avenue • Costa Mesa, California 92626 • 949.252.5170 fax: 949.252.6012

March 22, 2019

Michael Smith, Aviation Safety Officer  
Department of Transportation  
Division of Aeronautics – M.S. #40  
1120 N Street  
P.O. Box 942874  
Sacramento, CA94274-0001

**Subject: Proposed INDA Charter School at 2495 Campus Drive, Irvine, CA**

Dear Mr. Smith:

Thank you for the opportunity to review the proposed Irvine/Newport Development Area (INDA) Charter School site located at 2495 Campus Drive in the context of the Airport Land Use Commission's (ALUC) *Airport Environs Land Use Plan (AELUP)* for John Wayne Airport (JWA). The proposed project consists of a two story, 17,635 square feet building with a proposed building height of approximately 28.6 feet. The building is proposed to accommodate seven to nine classrooms.

The ALUC originally submitted comments to you on the proposed school site on February 11, 2019. During the February 21, 2019 ALUC meeting, the Commission discussed this item further and wanted to convey their strong opposition to locating the proposed school site within the Traffic Pattern Zone for JWA. The proposed school will be located at 2495 Campus Drive in Irvine, California and would be subject to overflight of aircraft at low altitudes.

The following exhibits are attached for your information:

- JWA Flight Tracks for March 13, 2019
- JWA Flight Track Density Analysis for March 11, 2019 to March 15, 2019
- JWA Altitude Analysis

The attached exhibits demonstrate the high density of traffic over the proposed school site in relation to the touch-and-go pattern at JWA. The JWA Altitude Analysis shows that the average altitude of aircraft over the project site is 867 feet mean sea level (msl). The majority of flights would be flying between 800 feet msl to 1,000 feet msl.

As stated in the previous comments submitted, the proposed project is located within the 60 dBA CNEL noise contour for JWA. Noise impact in this area is sufficient to require sound attenuation as set forth in the California Noise Insulation Standards, Title 25, California Code of Regulations. Single noise events in this area create serious disturbances to many inhabitants. The attached exhibits demonstrate the high density of traffic over the project site and the potential for noise disturbance which would not be ideal for a proposed school site.

The proposed project falls within Safety Zone 6 for JWA. Per the California Airport Land Use Planning Handbook (October, 2011), residential uses are normally allowed, outdoor stadiums and similar uses with very high intensities should be avoided, and uses such as children's schools, large care centers, hospitals, and nursing homes are limited. In this case, because of the high density of aircraft flying at low altitudes over the proposed project site, the ALUC does not recommend locating the INDA Charter School at 2495 Campus Drive.

Thank you again for the opportunity to comment on the proposed charter school project. Please contact Lea Choum at (949) 252-5123 or via email at [lchoum@ocair.com](mailto:lchoum@ocair.com) should you have any questions related to the Airport Land Use Commission for Orange County.

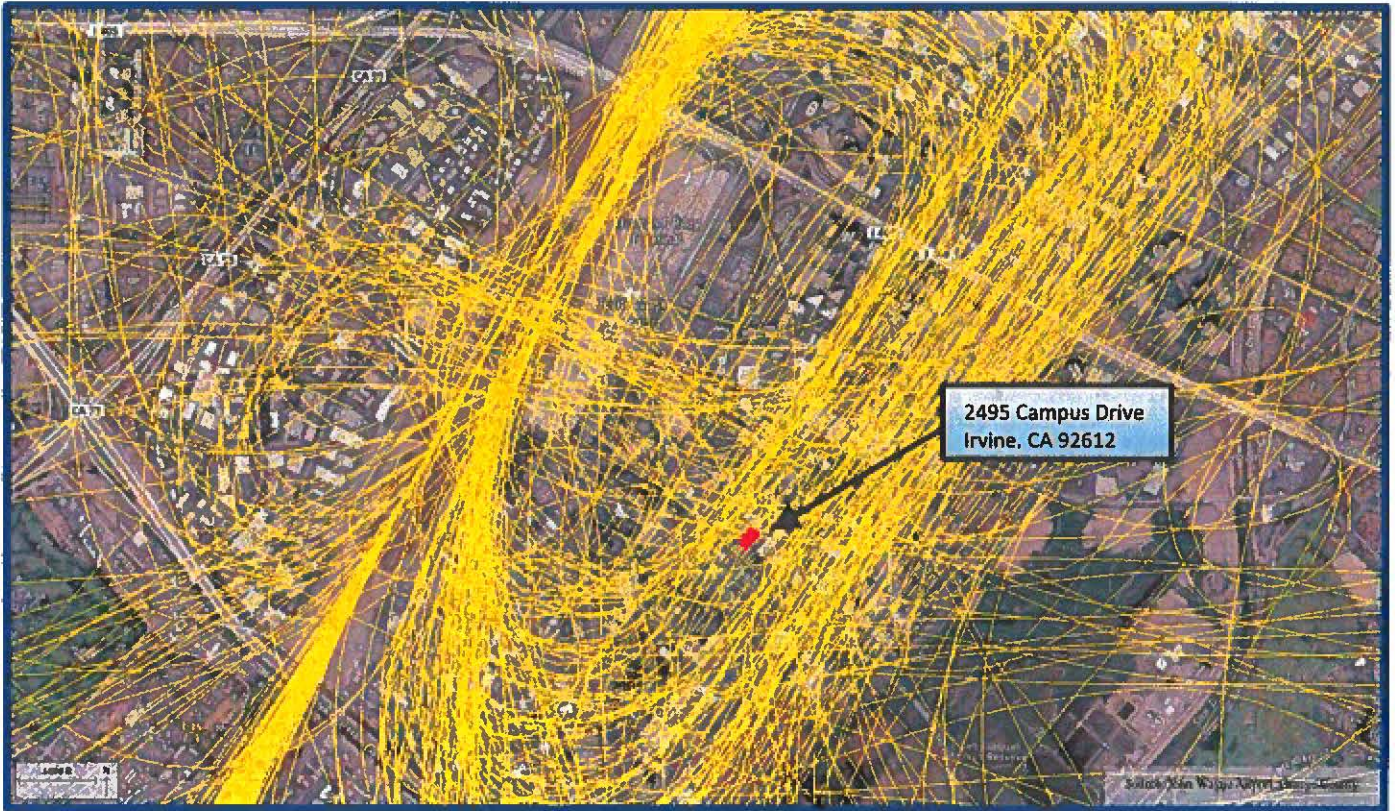
Sincerely,

A handwritten signature in blue ink that reads "Lea U. Choum". The signature is fluid and cursive, with a long horizontal stroke at the end.

Lea U. Choum  
Executive Officer



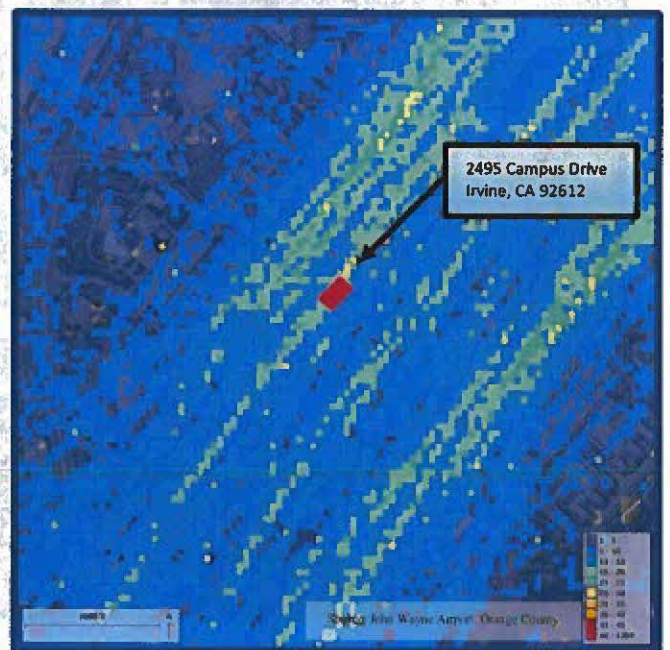
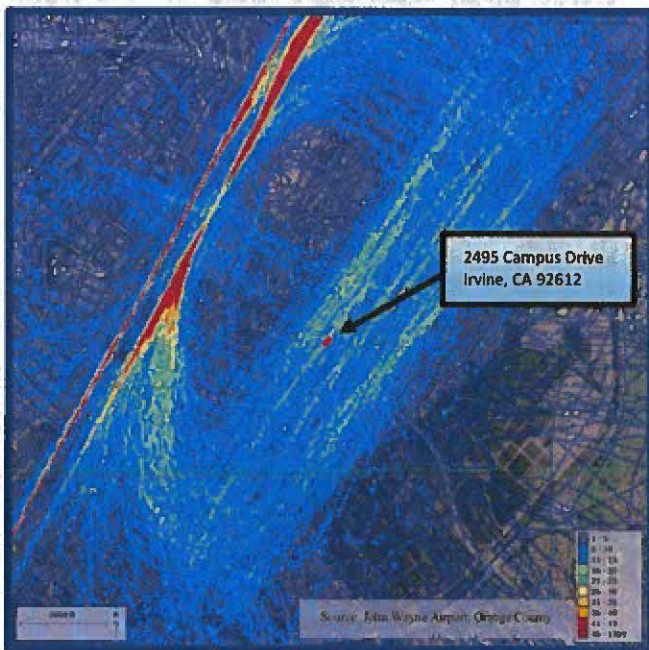
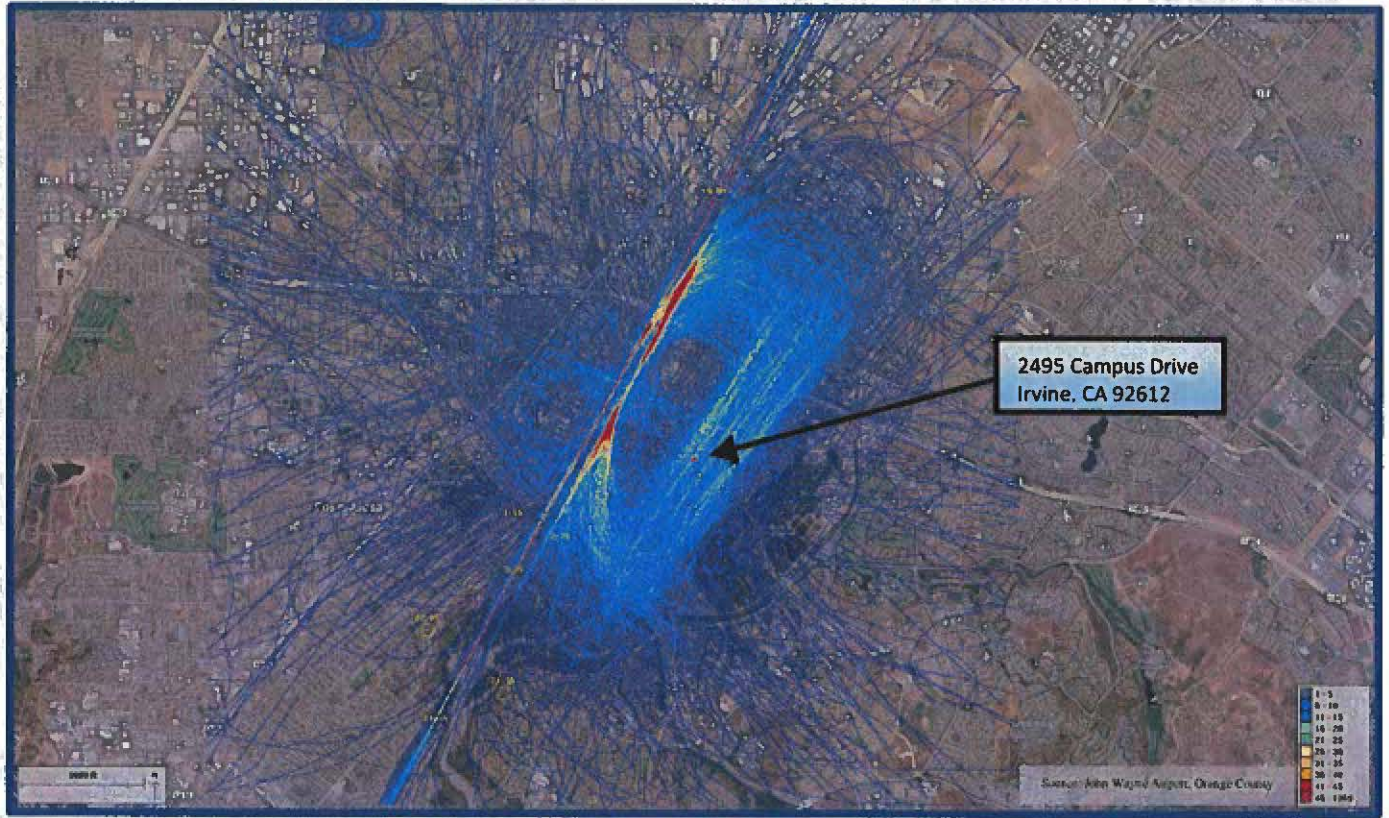
John Wayne Airport Flight Tracks  
March 13, 2019



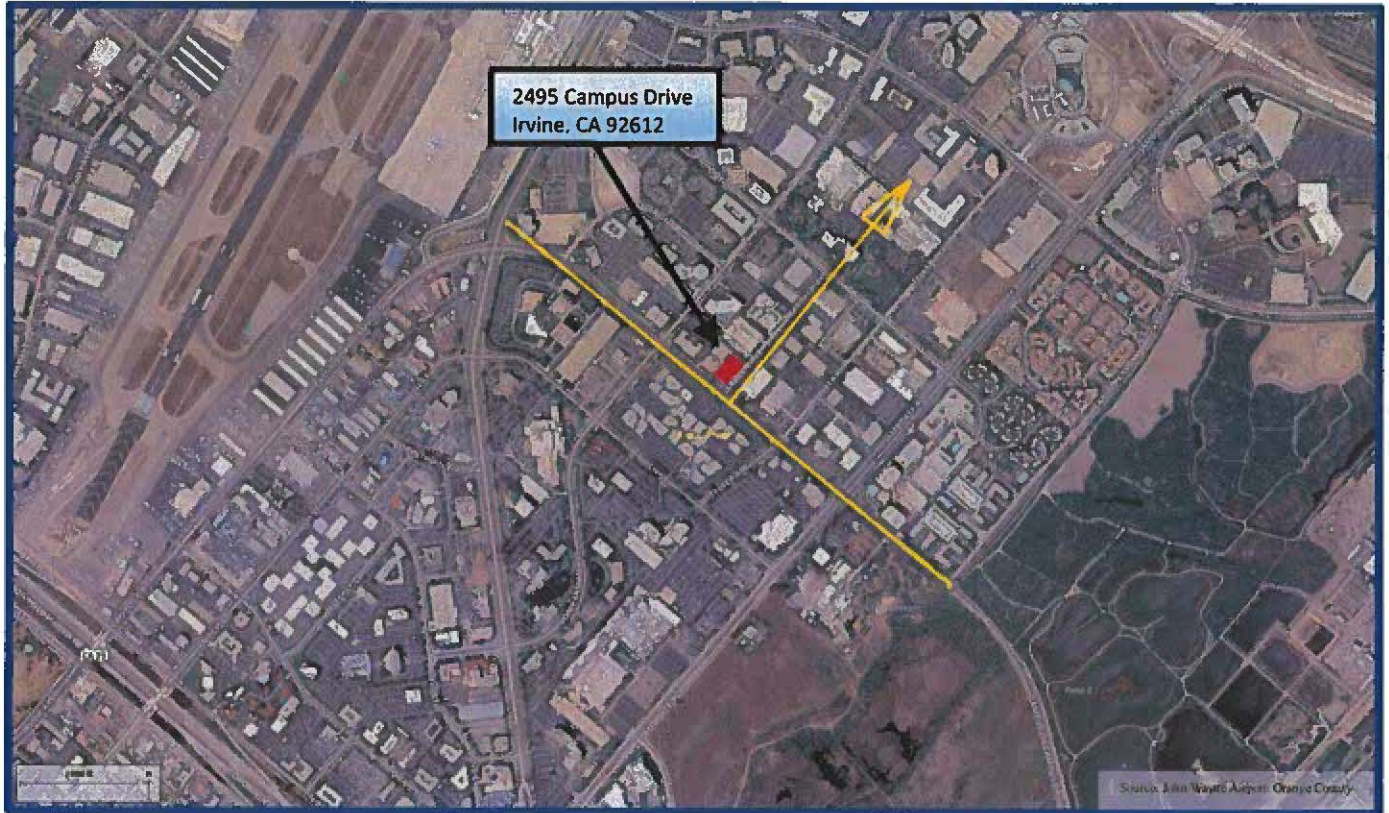




John Wayne Airport Flight Track Density Analysis  
1,369 General Aviation Non-Jet Operations  
March 11, 2019 to March 15, 2019



John Wayne Airport Altitude Analysis  
 598 Operations | 867 ft. MSL Avg. Altitude  
 March 11, 2019 to March 15, 2019



John Wayne Airport  
 Penetration Gate Plot for Gate 2495 Campus  
 3/11/2019 08:08:13 - 3/15/2019 22:58:04  
 598 Tracks Crossed Gate. Left=260(43.48%), Right=338(56.52%)

